

NI-IMAQ FOR WINDOWS 95/NT

NI-IMAQ for Windows 95/NT is the imaging acquisition software for all National Instruments IMAQ devices. The NI-IMAQ software is compatible with Windows 95 and Windows NT 4.0 or later.

These release notes describe how to use the `Setup` program to install your NI-IMAQ software. Please also see the `ReadMe.txt` file included with your software for the most up-to-date information about this release of NI-IMAQ.

NI-IMAQ Documentation

Your NI-IMAQ software documentation is online. Refer to the *About the Online Manual Set* section later in these notes for more information about using the online manuals.

Software Components

Your NI-IMAQ software kit contains the following components:

- NI-IMAQ Dynamic Link Library and Virtual Device Driver
- NI-IMAQ Microsoft Visual C/C++, Borland, Watcom, and Symantec import libraries
- IMAQconf Configuration Utility
- Windows 95/NT installer
- NI-IMAQ sample code
- Getting Started with Your IMAQ PCI/PXI-1408 and the NI-IMAQ Software for Windows 95/NT*
- NI-IMAQ User Manual*

BridgeVIEW™, IMAQ™, and LabVIEW™ are trademarks of National Instruments Corporation. Product and company names are trademarks or trade names of their respective companies.

- ❑ *NI-IMAQ Function Reference Manual*
- ❑ *NI-IMAQ VIs for G Reference Manual*

Installation Procedures

Insert the NI-IMAQ media (CD-ROM or diskette) into your drive. Run the Setup.exe program to start the installation.



Note:

You must have administrator access in Windows NT to perform the installation.

The initial NI-IMAQ installer screen, shown in Figure 1, indicates the installation version of your NI-IMAQ software.



Figure 1. Initial Installer Screen

Destination Directory

The **Select Destination Directory** screen specifies where all NI-IMAQ application files reside. As shown in Figure 2, you can choose which directory the installer uses by clicking on the **Browse** button and selecting the directory you want to use. By default, the installer creates the directory structure under the C:\NI\IMAQ directory.

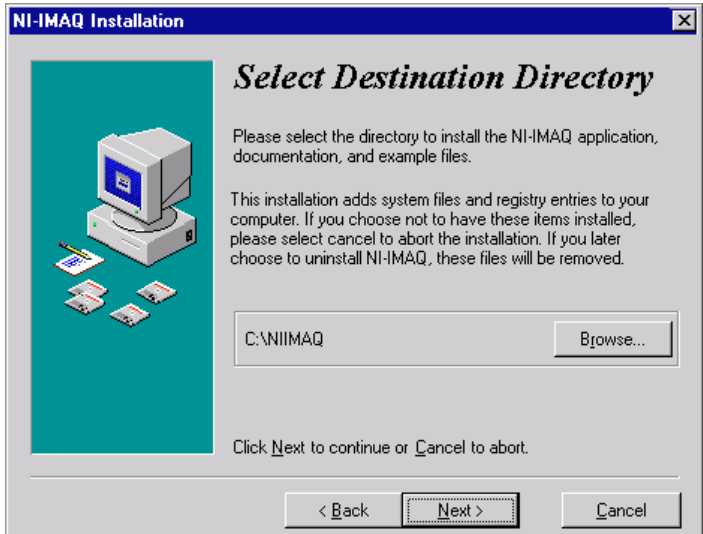


Figure 2. Destination Directory Screen

Select Components

Use the **Select Components** screen, shown in Figure 3, to select the components you want to install. The installer scans your computer for any installed National Instruments software products and displays them at the top of this screen. The installer then automatically checks which components it suggests you install. To change the default selection, check or uncheck any NI-IMAQ component. Press the **Next** button to continue the installation.

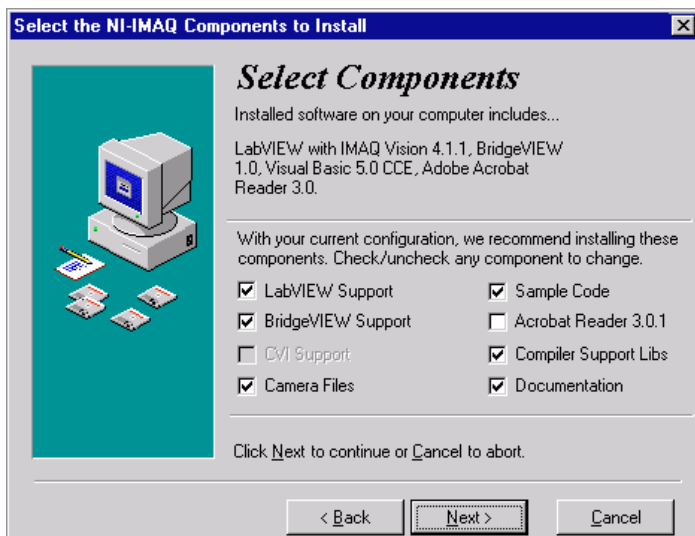


Figure 3. Select Components Screen

Completing Installation

If your installation was successful, the **Installation Successful** screen shown in Figure 4 appears.

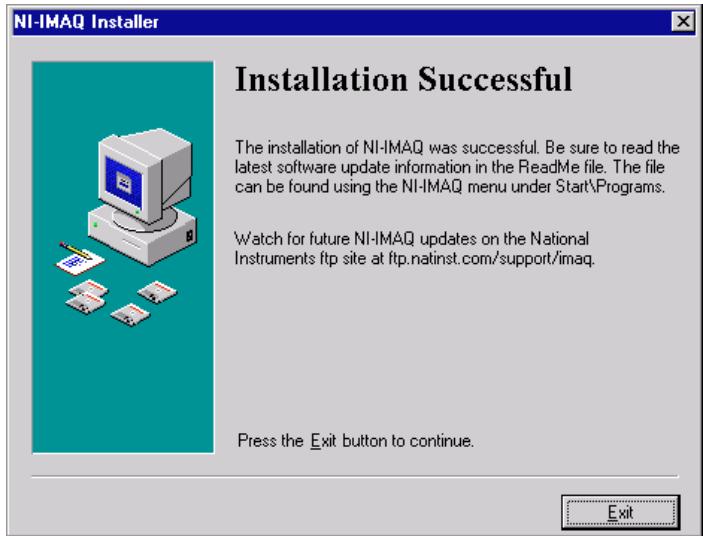


Figure 4. Installation Successful Screen

Click the **Finish** button to complete your setup. You can view the `ReadMe.txt` file to obtain important tips on using the NI-IMAQ software by selecting it using the **Start»Programs»NI-IMAQ»ReadMe** menu item.

You must restart your computer to activate the NI-IMAQ driver software.

IMAQ Hardware Configuration

Configure and test your IMAQ hardware by running the `IMAQconf` configuration utility. Refer to the *Configuration and Installation* and *Configuration Utility* chapters in your IMAQ device documentation for configuration, installation, and testing instructions.

NI-IMAQ 1.1 and LabVIEW/BridgeVIEW Compatibility

Error Handling

The Simple Error Handler and General Error Handler VIs (**Functions»Time&Dialog**) now include NI-IMAQ error information. Therefore, NI-IMAQ 1.5 no longer uses the IMAQ Error Handler for error handling.

For compatibility with NI-IMAQ 1.1, the IMAQ Error Handler is included in the `vi.lib\niimaq` directory. Future versions of NI-IMAQ will not support the IMAQ Error Handler VI. Therefore, you need to replace the IMAQ Error Handler VI with the Simple Error Handler VI in your existing applications.

Updated IMAQ Vision Subset

NI-IMAQ 1.5 installs an updated IMAQ Vision subset. The prefix of all VI names has changed from *Cvi* to *IMAQ*. Each VI also includes LabVIEW and BridgeVIEW error clusters, which change the connector layout of each VI.

IMAQ Vision 4.1.1 Users

If you have IMAQ Vision 4.1.1 installed, the NI-IMAQ 1.5 installer does not install the IMAQ Vision subset and there are no compatibility issues.

IMAQ Vision 4.0.1 Users

If you have IMAQ Vision 4.0.1 installed, the NI-IMAQ 1.5 installer installs the updated IMAQ Vision subset in the `vi.lib\vision` directory. IMAQ Vision 4.0.1 remains in the `vi.lib\image` directory. Therefore, you have access to both IMAQ Vision 4.0.1 and the updated IMAQ Vision subset.

The IMAQ examples with IMAQ Vision use the IMAQ Vision 4.1.1 VIs. To run these examples, you need to replace IMAQ WindDraw with the Cvi WindDraw VI and IMAQ WindClose with the CVI WindClose VI.

By default, NI-IMAQ 1.5 sets the LabVIEW palette view to the **imaqview_old** view. This view includes the NI-IMAQ VIs, the IMAQ Vision 4.0.1 VIs, and the updated IMAQ Vision subset.

It is strongly encouraged that you upgrade to IMAQ Vision 4.1.1. This will change the *Cvi* prefix of the VIs to *IMAQ* and add error clusters to the VIs. IMAQ Vision 4.1.1 also includes support for MMX and new caliper tools. To order the upgrade, contact National Instruments.

NI-IMAQ Only Users

If you do not have IMAQ Vision, NI-IMAQ 1.5 installs the updated IMAQ Vision subset—IMAQ Create, IMAQ Dispose, and IMAQ ImageToArray. The *Cvi* Create, *Cvi* Dispose, and *Cvi* ImageToArray VIs are included for compatibility with existing applications. Future versions of NI-IMAQ will not include these compatibility VIs; therefore, you must update your applications to use the updated IMAQ Vision subset.

About the Online Manual Set

The NI-IMAQ documentation is shipped with your software as four Adobe Acrobat portable document format (PDF) files, `imaqum.pdf`, `imaqfrm.pdf`, `imaqgs.pdf`, and `imaqvi.pdf`. These files are online versions of the *NI-IMAQ User Manual*, the *NI-IMAQ Function Reference Manual*, the *Getting Started with Your IMAQ PCI/PXI-1408 and the NI-IMAQ Software for Windows 95/NT* document, and the *NI-IMAQ VIs for G Reference Manual*.



Note:

If you do not already have Acrobat Reader installed on your system, the installer will create a new directory, <target install dir>\ACROREAD, and insert the Adobe Acrobat Installer into it. Run this installer before viewing your online documentation. You must have Acrobat Reader 3.0 or later installed to use the online documentation.

Using the Online Manual Set

To view the documents, click the **Start** button on the taskbar, point to **Start»Programs»NIIMAQ»Manuals**, and click the appropriate document. This will automatically launch the Acrobat Reader and open the selected PDF file. You can assemble your own printed manuals by printing either the entire documentation set or only the sections relevant to your application.

Click on any entry in the table of contents to jump directly to that page. You can jump to major sections within each document quickly and easily by clicking on the bookmarks.

When you choose the **View»Go To Page...** option or are printing pages, you must use the page numbers in the lower left corner of the Acrobat window, not the number displayed at the bottom center of each manual page or listed in the contents and index. The PDF files are electronic equivalents of printed manuals. However, unlike printed manuals, the PDF file assigns consecutive numbers to each page throughout the document and displays this page number. These numbers may not match those shown at the bottom center of each manual page.

You can use Acrobat Reader to quickly find and go to every occurrence of any word or phrase in the entire document. Simply select the **Tools»Find...** option and type in the key word or phrase you want to find.



321 326B-01

Oct97